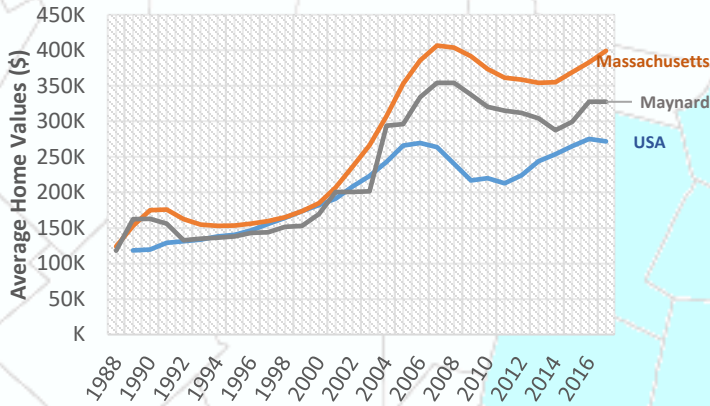
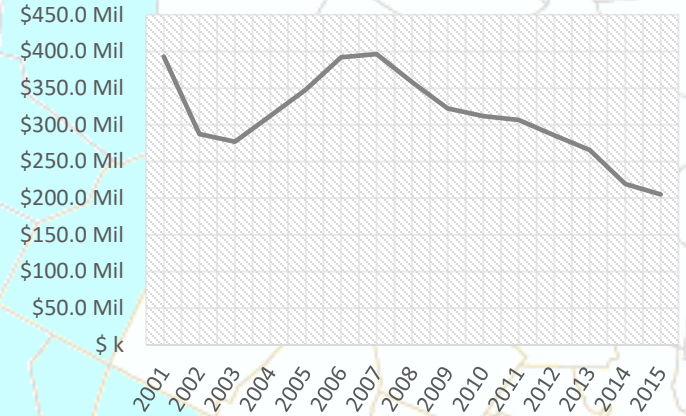


### Rising Home Values



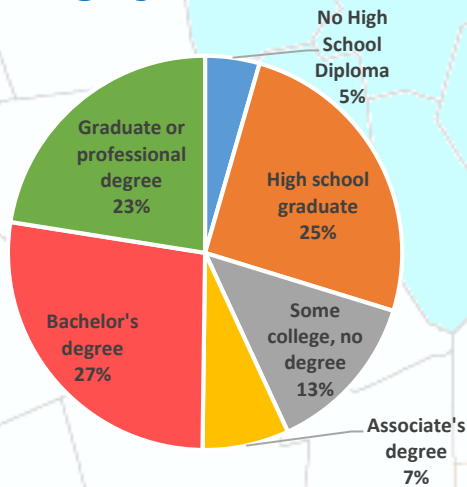
Beyond the year to year averages, in February 2017, the median single family home in Maynard sold for \$250,000<sup>1</sup>.

### Payroll



From Q2 2015 to Q2 2016, the payroll for all places of employment in Maynard was \$211,270,429.<sup>3</sup>

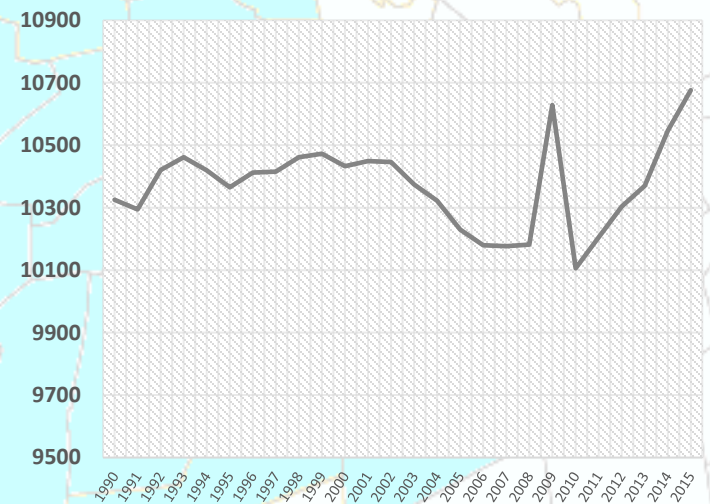
### Highly Educated



2011-2015 ACS (U.S. Census Bureau)

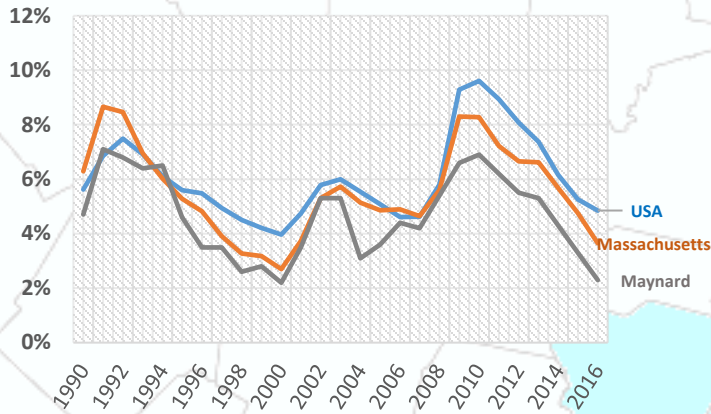
Maynard has a highly educated population compared to the state and to the nation with 50% of residents having a bachelor's degree or higher. During the same time 40.5% of people in Massachusetts had a bachelor's degree or higher, while only 29.8% of all people in the U.S. had one.<sup>4</sup>

### Growing Population

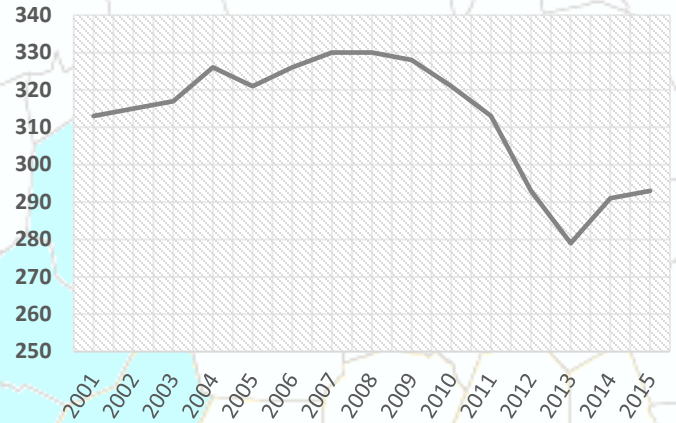


The population of Maynard has been increasing slowly. In 2000, the population of Maynard was 10,433 this decreased to 10,106 by 2010, and in 2015, the population of Maynard was estimated to be approximately 10,676.<sup>5</sup>

## Low Unemployment



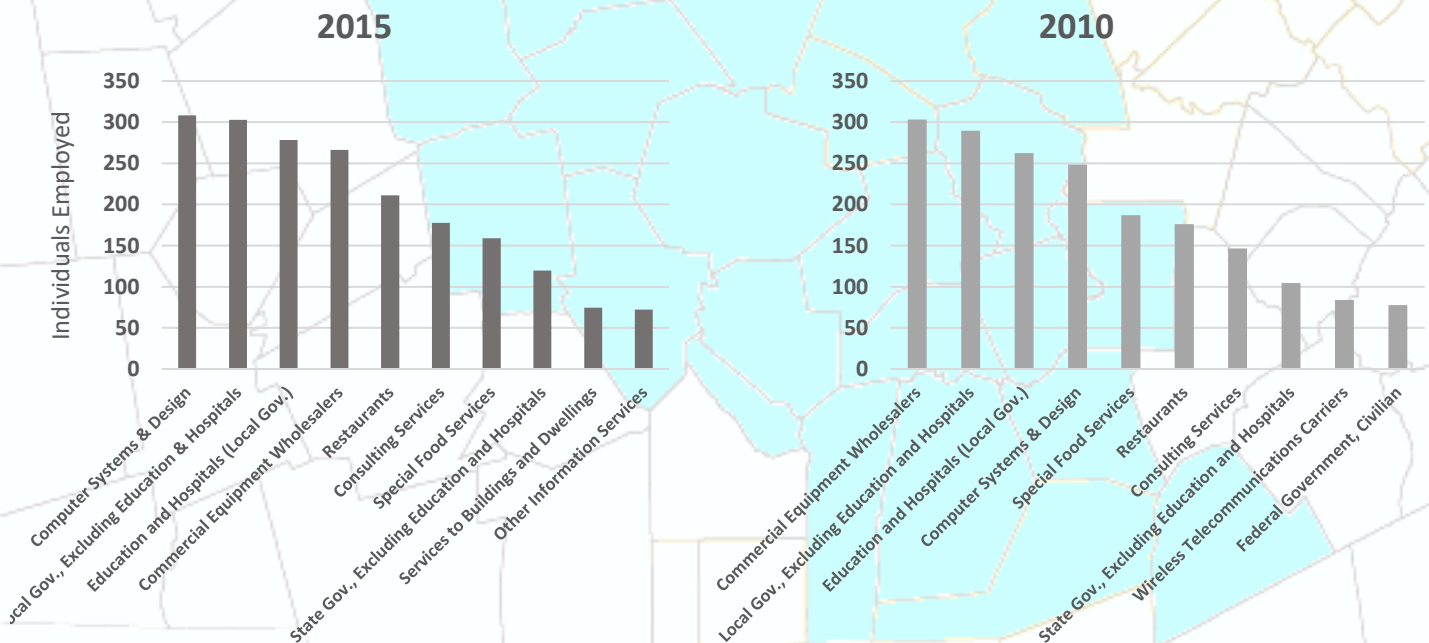
## Employers



Beyond the year to year averages, in February 2017, the unemployment rate in Maynard was 3.5%. This is slightly higher than the state and 495/MetroWest regional unemployment rates, which were both 3.4%, and much lower than the national unemployment rate of 4.8%<sup>3</sup>

The number of employers in Maynard has been decreasing in recent years. In 2001, there were 313 employers in the town, and by Q2 2016 this number had decreased to 293.<sup>3</sup> However, given the revitalization of Mill & Main and growing companies like Acacia Communications, recent employer trends look more positive.

## Top Ten Industries In Maynard



**Top Ten Industries data** and analysis conducted by the Public Policy Center at UMass Dartmouth for the 495/MetroWest Partnership in support of the 495/MW Suburban Edge Community Commission utilizing 2014 US Census Bureau Local Employment Dynamics. For more information on these data sets please visit <http://lehd.ces.census.gov/>

### Sources:

- Mass.gov Municipal Databank <http://www.mass.gov/dor/local-officials/municipal-databank-and-local-aid-unit/databank-reports-new.html> (Line graph municipal data)  
 1. The Warren Group <http://www.twgstats.com/tssub/start.asp> 2. Ycharts Average US Home Values [https://ycharts.com/indicators/sales\\_price\\_of\\_existing\\_homes](https://ycharts.com/indicators/sales_price_of_existing_homes)  
 3. Mass.gov Labor and Workforce Development <http://www.mass.gov/lwd/economic-data/> 4. US Census Bureau <https://www.census.gov/> 5. UMass Donahue Institute <http://www.donahue.umassp.edu/news-events/institute-news/new-population-estimates-for-mass-released-interactive-map-available>